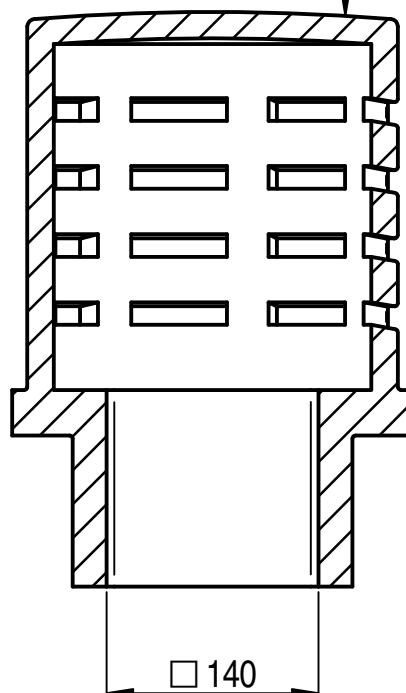


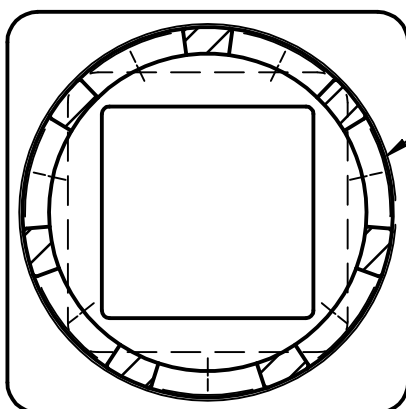
MARKINGS TO APPEAR ON THIS FACE AS FOLLOWS:

WTK EN13502
TYPE 2

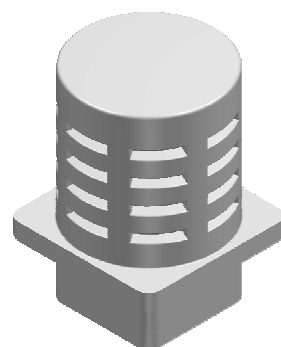


MARKINGS TO APPEAR ON SPIGOT AS FOLLOWS:

185
140
380/HT
WTK DATE (DDMMYYYY)



4 ROWS OF 7 - SLOTS
EQUI-SPACED AS SHOWN

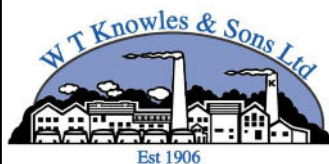


ISOMETRIC VIEW
1:10

ALL MARKINGS TO BE IN 10 HIGH
INDENTED CHARACTERS

GAS FLUE TERMINAL TO BS EN13502-TYPE 2

TO SPECIFY COLOUR, ADD SUFFIX TO CODE
R = RED, B = BUFF, X = BLACK, G = GLAZED



THIS DRAWING IS THE PROPERTY OF WT KNOWLES & SONS LTD
AND MUST NOT BE USED IN ANY WAY PREJUDICIAL TO THEIR INTERESTS

± 10% TOLERANCE TO BE APPLIED ON ALL DIMENSIONS

WEIGHT = 13.45 Kg

DRAWN: GB 30-01-08

SCALE

PROJECTION

DO NOT SCALE

ISSUE: 6 05-07-18

1:5



TITLE :-

GAS TERMINAL
SQUARE BASE FLANGED

DRAWING No. :-

KNO160SQF

A4